

RED POLL

BEEF CATTLE

IN THE news

ISSUE 1 | APRIL 2016



FROM THE DESK OF GAY WARD

President



Hello everyone, welcome to our Autumn Newsletter and first edition for 2016. I hope that wherever you are the conditions improve very soon while there might still be a chance of growth before the real cold sets in.

It has certainly been a widespread tough summer and autumn to date however market remains buoyant which is a positive aspect across the board.

An astute Red Poll breeder said to me "Red Polls know how to tough it out", we're lucky we have such a durable and resilient Breed of cattle through challenging times.

There has been plenty of activity amongst our Regions which is great to see, NNSW/QLD region held their inaugural On Farm Challenge in early March and by all accounts was an outstanding success and a very popular initiative in the region.

Royal Sydney Show again saw terrific support from Breeders with 34 Red Polls on display from the majority of our Regions - WA, VIC, NNSW/QLD and NSW, a really positive showing following the very successful Feature Show in 2015.

Vic Region has supported a site at Farmworld Field days in March and held their On Farm Challenge during April which has been very well supported and also remains popular amongst Members. Congratulations to all those who have contributed in all Regions.

We have recently launched a National Australian Red Poll Facebook page, as everyone is aware a very useful promotional tool provided it remains active. So please all of you out there who are Facebook savvy, get active, add posts, make comments this is your way to add value to Red Poll's worldwide, don't miss the opportunity. The Facebook page is for everyone, any Members who don't have Facebook and would like to contribute photos, comments, articles etc please contact our Executive Officer, or a Member of the National Executive and we will help to arrange for your input to be included.

National Executive is also working through and assessing all aspects of our current AI sires program looking at any opportunity for improvement.

Entries are now open for applications from Junior Members over the age of 14, for the opportunity to be awarded a scholarship to the renowned SA Junior Heifer Expo. If you are the successful applicant, this is a really worthwhile and enjoyable experience. All Region Members please encourage and support any of your Junior Members to Nominate. Entry's close 20th May with Entry Form and full details on our Web site.

Our National AGM, again incorporating a tour organised by the hosting Region, will be in SA in October this year. Details are provided in this edition.

This is truly a great initiative and certainly well received and organised in WA last year. I would recommend everyone save the date in their calendars and make the effort to join our SA Region for what I'm sure will be another great opportunity to be amongst fellow breeders, share ideas and view their herds which you may not have had the chance to see previously.

Until next time
Gay Ward



FROM THE DESK OF KERYN HUTTON

Executive Officer



Welcome to the start of another big year for Red Poll enthusiasts!

Applications for the ARPCBI Youth Award are now open and due to close on 20th May. The lucky winner will be awarded a scholarship to the South Australian Junior Heifer Expo held in Adelaide, 18th-21st July 2016. This is a great opportunity for junior members to meet others within the industry and enhance their cattle handling skills. Please contact me if you have not been able to access a nomination form.

The ARPCBI database is scheduled to be migrated to a new operating system over the next few months. ILR2 is a completely new system and replaces the old ILR1 database which is no longer supported by ABRI programmers. Future developments and services will only be developed for the ILR2 software. Currently these include development of large-scale genomic databases and associated services which are being taken up on a breed development basis.

While the new system will be of great benefit to members performance recording it will also streamline things from a registry viewpoint. The monthly updates of EBVs for Red Poll herds, participating in BREEDPLAN, will advantage the breed as a whole. In regard registration detail please ensure as much information as possible is recorded and sent in to the registrar so that the system is fully utilised.

The ARPCBI values feedback and input from members to assist in developing strategies to enhance and promote the breed. There have been a number of member suggestions submitted to the Executive these past few months some of which have been instigators of change e.g. updating of the AI Sire system.

"Keep those ideas rolling in"



FACEBOOK LAUNCH

National Facebook page - Australian Red Poll Beef Cattle, launched on 20th March 2016. Thanks to G Mulcahy for organising.

[www.facebook.com/
Australianredpolls](http://www.facebook.com/Australianredpolls)



'SAVE THE DATE' NATIONAL ANNUAL GENERAL MEETING AND STUD TOUR

THE SOUTH AUSTRALIAN REGION LOOKS FORWARD TO WELCOMING YOU!!!

The South Australian region will host the 2016 AGM to be held on Saturday 22nd October at 5.00pm

PROPOSED PROGRAM

Friday 21st October

- Evening arrival recommended for an early morning start on Saturday

Saturday 22nd October

- Visit Oakwood and Virangra studs
- 5.00pm AGM at Clare followed by dinner

Sunday 23rd October

- 7.30am Executive meeting at Clare
- Visit Moyle Park and Maleer studs

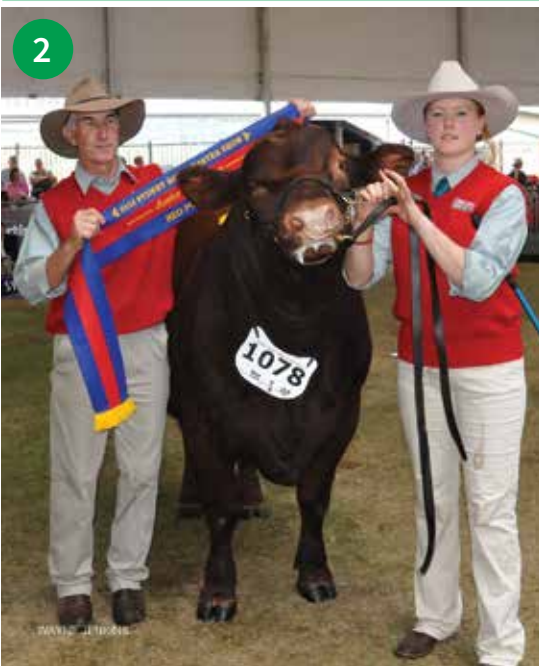
Further details to follow.

SYDNEY 2016 SHOW COMPETITION WINNERS

Judged by Mr. Tim Morrison



| | |
|--|---|
| JUNIOR CHAMPION FEMALE | Q & S Hooper – Red Sands Tammy |
| RESERVE JUNIOR CHAMPION FEMALE | Mrs G Ward – Redward Pazazz |
| SENIOR CHAMPION FEMALE | JH Williams & Co – Yongerellen Esme Kitty |
| RESERVE SENIOR CHAMPION FEMALE | R Draper – Red Cactus Treasure |
| GRAND CHAMPION FEMALE | JH Williams & Co – Yongerellen Esme Kitty |
| JUNIOR CHAMPION BULL | R Draper – Red Cactus Joe |
| RESERVE JUNIOR CHAMPION BULL | JH Williams & Co – Yongerellen Janitor Online |
| SENIOR CHAMPION BULL | N & P Lee – Omega 3 Reef Knot |
| RESERVE SENIOR CHAMPION BULL | I & J Coghlan – Eurimbla Boomer |
| GRAND CHAMPION BULL | R Draper – Red Cactus Joe |
| MOST SUCCESSFUL RED POLL EXHIBITOR | R Draper |
| THE BRIGADIER G S HURST PERPETUAL PRIZE FOR GRAND CHAMPION BULL | R Draper – Red Cactus Joe |
| THE W K COWLISHAW PERPETUAL TROPHY FOR THE BEST RED POLL EXHIBIT | R Draper – Red Cactus Joe |



1 Grand Champion Bull & Supreme Exhibit at Sydney 2016 with exhibitor Ross Draper and ARPCBI President Gay Ward, Arthurs Creek VIC, judge Tim Morrison, Toowoomba, QLD and handler Melissa Ball, Christmas Hills VIC.

2 Richard Wilkinson, Bringelly NSW placing the sash on the junior champion bull, led by Melissa Ball, Christmas Hills VIC.

3 Senior champion female at Sydney 2016 with exhibitor Murray Williams Quairading WA and Jill Coghlan, Gerogery NSW with handlers Rachael Williams and Doug Giles, Newdegate WA.



SOUTH AUSTRALIAN REGION REPORT

*All the news from
Richard Daley*



We are currently waiting for our opening season rains so seeding can start which tends to dominate our agendas at this time of the year. There were some good falls early in the year north of Adelaide that contributed to feed growth but most of that has now gone.

Traditional cattle prices are lower now as most people are hanging out for pasture. The S.A. Beef field days were held in February, with Moyle Park representing the breed again. This year a pen of 8 Moyle Park heifers were placed second in the Northern areas section of the event. Good interest was shown on the day and subsequently 3 bulls were sold to good herds.

Our regional meeting was held at Balaklava again with the main topic of discussion the AGM and tour to be held in S.A. in October. Further details should be available soon. Thirteen steers will be entered at Adelaide Show carcass competition. Maleer and Moyle Park are participating in the first Elders on line Mid North [of S.A.] bull sale starting this last week of April.

The region will again support the breed youth ambassador at the S.A. Heifer Expo in July.



WELCOME

The ARPCBI welcomes the following new members

GWH G White *Bellingen NSW 2455*

MBV K & M Clarke *Bellingen NSW 2454*

BGJ B Gardner *Inverell NSW 2360*

JCD C Devlin *Mt Russell NSW 2360*

JED E Devlin *Mt Russell NSW 2360*

E Moffitt *Delungra NSW 2403*

RBJ J & B Rohde *Pallamallawa NSW 2399*

GJC G & J Crowe *Benalla VIC 3672*



USA 2017

THE 15TH INTERNATIONAL RED POLL CONGRESS

The American Red Poll Association, extend an invitation to all Red Poll breeders to the USA to see the cattle and country.

The tour is 25 days in length and will encompass Red Poll cattle in differing US management styles, agriculture, historical places ranging from Appalachian settlements to the Biltmore Estate, entertainment from baseball to the famous Budweiser Clydesdales, as well as relaxation to visit and discuss the day's happenings.

Please see the payment procedure and the registration forms. We request one for each person attending.

Any questions contact Melissa at [Croswell Tours](mailto:CroswellTours) or Dan or Mary Jo Schmiesing at mardanacres@gmail.com

HUGE DEMAND FOR COLWICK CHEESE FOLLOWING APPEARANCE ON JAMIE OLIVER TV SHOW

By *Nottingham Post*
Posted: January 12, 2014

Sales of Colwick cheese are flying thanks to celebrity chef Jamie Oliver.

Jamie and his farmer sidekick Jimmy Doherty made it their mission to revive the almost-forgotten cheese on Jamie and Jimmy's Friday Night Feast, which aired last Friday.

And Nottingham stockists are already reporting a dramatic impact on demand, with shops sold out and queues of people desperate for a taste of the now famous cheese.

Rob Freckingham is owner of the cheese shop in Flying Horse Walk. He said orders were increasing. He said: "I have seen bits of the programme - I've had a lot of response on email through the shop website and it's really good for the East Midlands. "It's fantastic what Jamie has done. To go in with such a small scale product and take it nationally." He added: "We were the first stockist of the new breed, I'm proud to say.

"It sold well at launch and the older generation were buying at the start because they could remember it - now it seems that the younger generation are interested in it as well and you can use it as a soft cheese in cooking as well. "I think it's brilliant that

we've got such another great local product - it's putting us on the map in a positive way."

Miriam White is supervisor at Delilah Fine Foods in the city centre. She said: "We've sold quite a bit - we've had quite a few people come in and ask and our twitter feed has gone crazy. "I think it might take off - the publicity started in the summer and we have had it since August." She added: "It's definitely becoming more popular and we are using it quite a lot. We've put it on the menu as a Colwick cheese bruschetta and a sweet cake with it - a toasted pear loaf. "I took part in the program with Jamie Oliver at Jamie's Italian - they popped into Delilah and talked to us about the things we would do - we went to the restaurant and he cooked a whole lot of dishes - pasta, risotto, and sweet things too."

Emily Bredd, supervisor at Homemade cafe in Pelham street said the cheese had becoming a talking point. She added: "We've got it in a burger with beetroot and spinach. "We have had people coming in asking about it."

The cheese, which is light and curdy, dates back to the 1600s. It went out of production in 1993 before making its comeback at the Melton Mowbray Artisan Cheese Fair in May.

It is made in the Belvoir Ridge dairy at Crossroads Farm in Eastwell, Leicestershire, owned by Alan and Jane Hewson.

They use the milk from Red Poll cows at their farm to make the cheese.

"We are in a state of shock," Jane said. "We had to make some more on Sunday for the first time because they are running out. "We've had 30,000 hits on our website since the show with people from all over the world - it's been crazy."

Jamie and Jimmy filmed in Nottingham in August for the show. Jane joined Jamie in the kitchen, where he used the cheese to make pizza, pasta, risotto, stuffed courgette flowers and a salad with pea shoots, bean shoots, purple potatoes and mint.

Jamie described Colwick's finest as a "great cheese" on the show. He says: "This is not a cheese for a supermarket, this is a cheese for butcher's shops, delis, restaurants and pubs. I'm excited to communicate this story, this is just a beautiful, beautiful thing."

Read more: <http://www.nottinghampost.com/Huge-demand-Colwick-Cheese-following-appearance/story-20431100-detail/story.html#ixzz40IeAbdg>
Follow us: @Nottingham_Post on Twitter | NottinghamPostOnline on Facebook



NNSW/QLD REGION REPORT



4



5

2016 On-Farm Challenge

Stud and commercial members of the Qld/Northern NSW Red Poll Society participated in the regions' first on-farm challenge in March 2016. A total of 130 entries (95 stud, 34 commercial/crossbred) were received for the event and the quality of stock presented made it very difficult for the judge to select the best in each class.

Being part of the on-farm challenge involved breeders selecting their best cattle from the paddock and putting them in front of this year's judge – Jason Siddell (Senior Land Services Officer – Livestock) who is based in the Northern Tablelands. The judging focused on many different aspects of the animal including: structure (i.e. shoulders, legs/feet position, rump width, spring of rib); production (i.e. capacity, muscling, temperament); females – udder & tit formation, femininity; bulls – testicle shape/size, masculinity and quality of progeny.

A presentation luncheon was held at the Armidale RSL on 12th March where Jason Siddell announced the results.

- 4 Judge Jason Siddell with stud winners Jill Bockman and John Rhea, Prue Lee and Steve Williams
- 5 Jason Siddell with commercial winners Cameron and Judy Lisle; and Gordon Fletcher.



DO YOU HAVE A STORY TO SHARE

Please send stories and photos you would like included in the next edition to red.poll@abri.une.edu.au or fax to 02 6772 5376
Att: Keryn

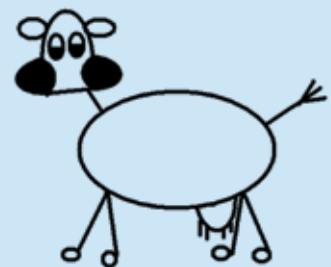


'SAVE THE DATE' RED POLL YOUTH CAMP

THE NNSW/QLD REGION LOOKS FORWARD TO WELCOMING YOU!!!

The Red Poll Youth Camp will be held by the NNSW/QLD Region on 7th, 8th and 9th of October Glen Innes Showgrounds.

Contact Rachael Hancock
0432 581493 or hancock45@hotmail.com



NNSW/QLD 2016 On-Farm Challenge Results

| CLASS | FIRST | SECOND | THIRD |
|--------------------------------|---------------------------------|---|----------------------------|
| 1. Female (9–16 mths) | Omega 3 Gabriel | Tanamerah Kaitelynne | Wilanstie Willows Response |
| 2. Female (16–24 mths) | Tanamerah Kordelia | Omega 3 Rocnester | Omega 3 Velvet Forrest |
| 3. Female (24–36 mths) | Broadacre Valley Jenna | Wilanstie Noonamah Spice | Eurimbla Flippant |
| 4. Female (3 – 5 yrs) | Wilanstie Good Girl | Omega 3 1483 | Almora Belle 3 |
| 5. Female (5 yrs & over) | Cooeeyana Pride | Kookabookra Britney | Kookabookra Sandy |
| 6. Bull (9 – 16 mths) | Rockview Uncle Albert | | |
| 7. Bull (16 – 24mths) | Tanamerah Go Gettum | Omega 3 Roster | Lagoona Louigi |
| 8. Bull (24 – 5 yrs) | Tanamerah Elton Jon | Cooeeyana Rookie | Omeag 3 Reef Knot |
| 9. Bull (5 yrs & over) | Derrileen C.R.B | Eurimbla Leroy | Naranghi Forrester |
| 10. Commercial Cow/heifer | Glen Lossie P/S – Cameron Lisle | Glen Lossie P/S – Cameron Lisle | Gordon Fletcher |
| 11. Commercial Bull | Glen Lossie P/S – Cameron Lisle | Catherine Kendrick | Gordon Fletcher |
| 12. Red Poll steer | BK Munt | Gordon Fletcher | AJ & RM Hancock |
| 13. Pen of 3 Red Poll steers | Tranquility – B&L Beckham | Gordon Fletcher | |
| 14. Cross Bred Bull | AJ & RM Hancock | | |
| 15. Cross Bred Cow/heifer | Gordon Fletcher – RP x Senepol | J Rhea & Jill Bockman | T Light & B Looker |
| 16. Pen of Heifers | BK Munt | Gordon Fletcher | J Rhea & Jill Bockman |
| Junior Champion Bull | Rockview Uncle Albert | Reserve Champion Junior Bull | Tanamerah Go Gettum |
| Senior Champion Bull | Tanamerah Elton Jon | Reserve Senior Champion Bull | Derrileen C.R.B. |
| Junior Champion Heifer | Omega 3 Gabriel | Reserve Junior Champion Heifer | Tanamerah Kordelia |
| Senior Champion Cow | Cooeeyana Pride | Reserve Senior Champion Cow | Wilanstie Good Girl |
| Most Successful Stud Exhibitor | JD Rhea & Jill Bockman | Most Successful Commercial Exhibitor | Gordon Fletcher |

Judge Jason Siddell repeatedly commented on the winning cattle having structural correctness, good growth and yield and good muscle. He commented on the excellent calves at foot and mentioned that Red Polls have good longevity, something that many breeds are losing. He also commented that the Grand Champion Cow, Cooeeyana Pride would produce outstanding sires for the breed. The Grand Champion bull, Tanamerah Elton Jon was a high yielding bull. Jason said that the winning commercial cattle were competitive against any breed and that there were massive opportunities for cross breeding. He also underlined the importance of marketing.

SA Junior Heifer Expo

SA Junior Heifer Expo - 18th - 21st July 2016 Adelaide Showground

The Australian Red Poll Cattle Breeders Inc. will offer a junior member of the ARPCBI the opportunity to attend the South Australian Junior Heifer Expo.

Please contact the Executive Officer for an application form or download from the Red Poll website www.redpoll.org.au



VICTORIAN REGION REPORT

All the news from Ian Staff



6

Sydney Royal Show

Three Victorian member herds participated at the Sydney Royal Easter Show - they were Stormley - Trent and Shane Storm, Redward - Gay Ward and Red Cactus - Ross Draper. Competition was extremely high from all parts of Australia with 34 Red Polls entered.

Congratulations go to those who participated and gained awards.

The highlight was the performance of Red Cactus Joe, the Junior Champion Red Poll Bull who was also crowned Grand Champion Bull and Supreme Champion Red Poll at the Show.

Life Member Ross Draper is to be congratulated for his stunning effort in breeding such an outstanding animal. We also wish him a speedy recovery from his recent shoulder operation.

- 6 Red Cactus Joe – Supreme Champion Red Poll at Sydney Royal Easter Show 2016.
- 7 Doug D’Oliver, Anne Moya, Ian and Nell Staff (L– R).
- 8 Sophronites Stella thinks this is all Ho Hum at Lardner Park.

Farm World Field Days 2016 7th to 10th April, Lardner Park Warragul

Report by Anne Moya - Publicity Office

A team of enthusiastic Red Poll members showcased the breed over four days at Farm World 2016

Displaying two outstanding heifers from the Sophronites Stud, which had been immaculately prepared for exhibition by Nell and Ian Staff. The heifers were a great hit with serious cattle producers and families alike, with many people making very favourable comments about their beautiful colour, temperament and general appeal.

The Red Poll site was a hive of activity, with many children patting the heifers, and a number of cattle producers making enquiries about the breed. Many showbags, containing a copy of the Annual and information sheets, were distributed to those making serious enquiries. The types of enquiries received included: bulls, semen, cows and calves, joining-age heifers, steers, and even a house cow! Several commercial producers with Angus herds were considering infusing their herds with Red Poll genetics. An interesting enquiry was from a supplier to the Gippsland Natural beef brand, who generally sources Murray Grey steers, and is interested in trialling Red Poll steers, due to favourable reports of Red Poll carcass attributes.

Nell and Ian Staff, Mark Harris and Doug D’Oliver did a sterling job setting up the exhibit the day before. They also took turns at running the exhibit, along with Elke Harris and Anne and Frank Moya.



7



8

Victorian Red Poll On Farm Challenge 2016

The Victorian Red Poll "On Farm Challenge" for 2016 commenced on Sunday the 17th April when driver Doug D'Oliver picked up Judge Annette Walker from her home in Buln Buln and drove her to the three herds being assessed on the day. They were Mark and Elke Harris' Ketlang Stud, Doug D'Oliver's St Cerry Stud at Leongatha and Anne and Frank Moya's Tiraslea Stud at Nar Nar Goon. Anne and Frank Moya visited all three herds to take photos also.

Proceedings then continued early on the following Friday when Anne and Frank Moya transported Annette to Ian and Nell Staff's Sophronites Stud at Pheasant Creek. They arrived at 9.15am and judging continued until noon. After lunch, Don Castle, who had driven from Stoneyford in Western Victoria, drove the Judge to Ian and Jill Coghlan's Eurimbla Stud in Gerogery NSW (just over the border). Both Don and Annette were hosted by the Coghlan's overnight after judging of the cattle was completed.

The next day, Saturday 23rd April, saw another long day's travel to the Storm family's Stormley Stud in Barham, also over the border in NSW. Judging of cattle was completed there and Don then commenced on the long drive to Stoneyford for Don Castle's Koallah Park Stud. Annette was hosted by Don and wife Beverley at home, and after the Koallah Park Red Polls were assessed. The next herd to be assessed was that of Sandra and Damian McAlinden's Rua Mor Stud, followed by that of Greg and Kelley Abbott's Turanga Stud at Kolora. Once again, the Castles hosted Annette overnight and then Don drove her to the home of Nell and Ian Staff in Pheasant Creek where Annette gave a presentation on her judging techniques and presented the awards for the Challenge. She explained how she had a strong connection with Red Polls from an early age when her parents milked Jersey cross Red Polls and then used Red Polls with their great milking qualities to finish off calves properly. Annette is well known as becoming one of the most successful breeders and exhibitors of Red Poll cattle, winning numerous Championships in major Shows and progressing the breed by training young people in grooming, feeding and showing her cattle and managing the first Red Poll Handlers Camp at Heathcote Junction.

A hearty lunch was provided by Nell Staff for all in attendance and Annette was thanked for her wonderful performance and a job very well done by President Gay Ward. Selected photos were posted on our Facebook Page www.facebook.com/Australianredpolls and further information can be seen on our websites www.redpoll.org.au and www.redpollvic.com

All told, entries included 28 junior heifers, 42 senior cows (the oldest was a 12 year old cow exhibited by Don Castle), 12 bulls and 7 pairs of cattle under 18 months each bred from the same sire. Nine Red Poll Herds were represented and these entries vindicate the concept of this event where entries surpass Red Poll exhibits at any major Show in Australia.



- 9 Ian Coghlan (Gerogery NSW) Winner of Senior Champion Female; Judge Annette Walker - Buln Buln; Don Castle (Stoneyford, Vic) Winner of Champion Bull.
- 10 Some Participants in the Victorian Red Poll On Farm Challenge 2016 - from left - Anne Moya Tiraslea, Frank Moya (Tiraslea), Nell Staff (Sophronites), Jill Coghlan (Eurimbla), Ian Coghlan (Eurimbla), Greg Abbott (Turanga), Doug D'Oliver (St Cerry).
- 11 Anne Moya, Ian Staff, Judge Annette Walker, Nell Staff and Don Castle VIC On Farm Challenge.

Victoria 2016 On-Farm Challenge Results

| CLASS | FIRST | SECOND | THIRD |
|--------------------------|--|--|---|
| 1. Female (9-16 mths) | D & S McAlinden – Rua Mor Olive | N & I Staff – Sophronites Florence | S Storm & Sons Stormley Princess |
| 2. Female (16-24 mths) | D Castle – Koallah Park Judy Rose | G Abbott – Turanga Ada | G Abbott – Turanga Gay |
| 3. Female (24-36 mths) | I & J Coghlan – Eurimbla Rising Moon | D Castle – Koallah Park Rae Lyn | D Castle – Koallah Park Prudence Dainty |
| 4. Female (3 – 5 yrs) | D Castle – Koallah Park Violets Gloria | S Storm & Sons – Stormley Lara | N & I Staff – Sophronites Lucinda |
| 5. Female (5 yrs & over) | I & J Coghlan – Eurimbla Next Door | D Castle – Koallah Park Heather | D D'Oliver – Stormley Jodie |
| 6. Bull (9 – 16 mths) | D Castle – Koallah Park Earnest | D Castle – Koallah Park Sinatra Ajax | G. Abbott – Turanga EMA 402 |
| 7. Bull (16 – 24mths) | G Abbott – Almora Amos | D Castle – Koallah Park Nathan | Eurimbla Ace |
| 8. Bull (24 – 5 yrs) | D & S McAlinden – Rua Mor Bolt | G Abbott – Turanga EDA Hero | |
| 9. Bull (5 yrs & over) | S Storm & Sons Sire – Stormley Ned Kelly | S Storm & Sons Sire – Hallmarks Power Walker | G Abbott Sire – Turanga EDA Hero |
| Junior Champion Heifer | D & S McAlinden – Rua Mor Olive | | |
| Senior Champion Female | I & J Coghlan – Eurimbla Next Door | | |
| Champion Bull | D Castle – Koallah Park Earnest | | |



National Executives 2016

President

Gay Ward

PO Box 460 Altona North VIC 3025

☎ 0417 558 508

✉ honerv@gmail.com

Vice President

Dean Jensen (NNSW/QLD)

PO Box 3045 Lismore NSW 2480

☎ 02 6663 1206 ☎ 0488 536 923

✉ katgo@mullum.com.au

Treasurer

Ross Draper (VIC)

75 Runnings Creek Road Arthurs Creek VIC

☎ 0428 510 252

✉ redcactus@bigpond.com

Gay Ward (Federal)

PO Box 460 Altona North VIC 3025

☎ 0417 558 508

✉ honerv@gmail.com

Tim Light (Federal)

191 Dumaresq Road Armidale NSW 2350

☎ 02 6775 1129 ☎ 0458 744 552

✉ lagoona191@bigpond.com

Garrick Mulcahy (NSW)

1027 Horsley Drive Wetherill Park NSW 2164

☎ 02 9604 5846 ☎ 0418 417 899

✉ garrick.mulcahy@bigpond.com

Murray Williams (WA)

PO Box 100 Quairading WA 6383

☎ 08 9645 5220

✉ yongerellen@activ8.net

Peter Wilson (SA)

PO Box 251 Minlaton SA 5575

☎ 08 8853 4104 ☎ 0408 534 071

✉ pcklwilson@hotmail.com

ABRI Contacts

Executive Officer and Breedplan Processing Officer

Keryn Hutton

ABRI University of New England
Armidale NSW 2350

☎ 02 6773 3059 ☎ 02 6772 5376

✉ red.poll@abri.une.edu.au

🌐 www.BREEDPLAN.une.edu.au

Registrar

Sharon Reynolds

☎ 02 6773 2327 ☎ 02 6772 5376

✉ sharon.reynolds@abri.une.edu.au

Technical Officer

Catriona Millen

☎ 02 6773 3357

✉ catriona@sbts.une.edu.au